

# THE HEARTLAND 1100

## WITH BASEMENT

Design, Floor Plan & Elevations



[ElementicF.com](https://www.elementicf.com)



The drawings and images contained in these pages are current at the time of printing. However, the drawings and images may differ slightly when final plan sets are requested, as designs are subject to change.

# THE HEARTLAND 1100

WITH BASEMENT  
DESIGN



## FEATURES:

3 Bedroom, 2 Bathroom, Kitchen, Living Room

## INTERIOR LIVING SPACE:

Ground Floor: 1068 sq ft

## APPROXIMATE EXTERIOR DIMENSIONS:

41' W x 40' D



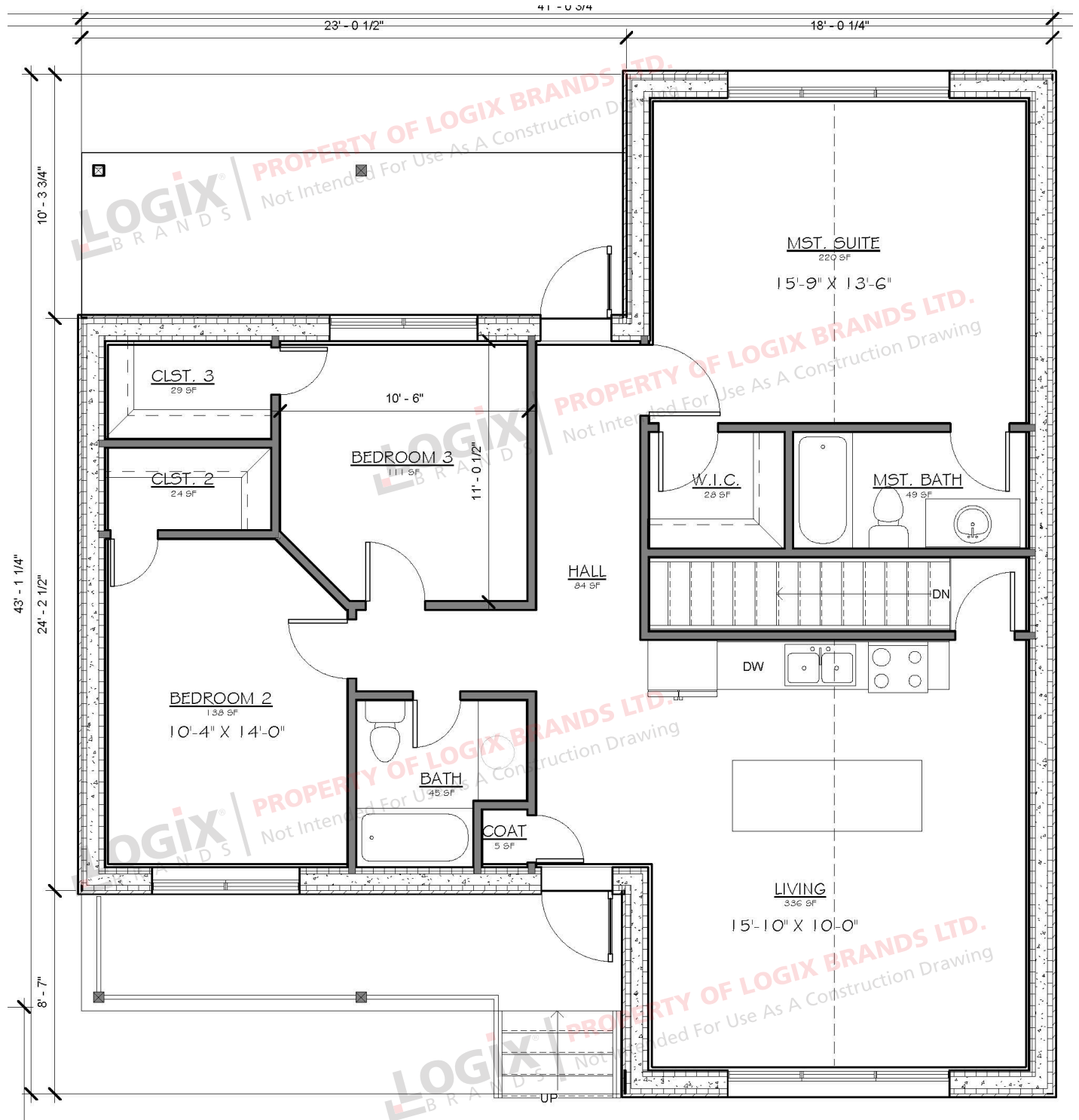
## ROOM SCHEDULE:

Name	Level	Area	Perimeter
Primary Suite	First Floor	220 SF	59' - 7 1/2"
Bedroom 3	First Floor	111 SF	41' - 2 1/4"
Clst. 2	First Floor	24 SF	20' - 11 7/8"
Clst. 3	First Floor	29 SF	22' - 3 7/8"
Bedroom 2	First Floor	135 SF	46' - 0 1/2"
Bath	First Floor	44 SF	28' - 2"
Coat	First Floor	4 SF	8' - 3 1/2"
Hall	First Floor	84 SF	51' - 5 1/8"
Living	First Floor	342 SF	76' - 5 1/2"
W.I.C.	First Floor	28 SF	21' - 3 3/8"
Primary Bath	First Floor	49 SF	29' - 9 1/8"
Basement	Basement	1151 SF	159' - 4"

# THE HEARTLAND 1100

WITH BASEMENT

Floor Plan - Main Level





# THE HEARTLAND 1100

WITH BASEMENT

## Elevations



FRONT ELEVATION



RIGHT ELEVATION

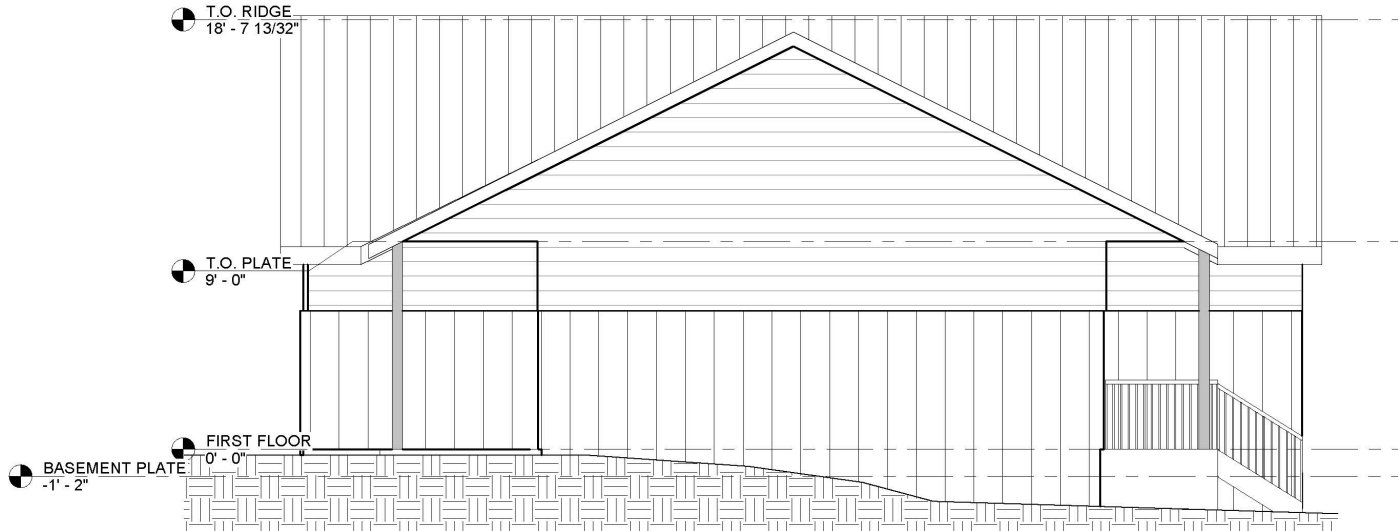
# THE HEARTLAND 1100

WITH BASEMENT

Elevations



BACK ELEVATION



LEFT ELEVATION

# THE HEARTLAND 1100

DESIGN, FLOOR PLAN & ELEVATIONS



## REQUEST A QUOTE & ORDER A PLAN SET BASED ON THIS DESIGN

Your Element ICF advisor can refer you to a designer who will provide a quotation for your complete plan set including any required modifications.

Please note that some locations may require specific engineering and/or local code adoptions. Be sure to check with your contractor or local building authority to see what is required for your area.

[Go to the Online Collection and Request a Quote for this Plan Set](#)



## CONNECT WITH A LOCAL MANUFACTURER

**888.838.5038**

330 Cain Drive  
Haysville, KS 67060-2004

**888.453.5961**

11581-272 St.  
Acheson, AB T7X 6E9

**888.706.7709**

840 Division St.  
Cobourg, ON K9A 5V2

**888.453.5961**

6333 Unsworth Rd.  
Chilliwack, BC V2R 5M3

**877.789.7622**

35 Headingley Rd.  
Headingley, MB R4H 0A8



© Copyright Logix Brands Ltd. (2023) All rights reserved.

No part of the work contained herein as covered by this copyright may be reproduced or used in any form, or any means – graphic, electronic or mechanical, including without limitation photocopying. By using these products, you agree to assume all risks associated therewith. See [LogixBrands.com/Disclaimer-General](https://LogixBrands.com/Disclaimer-General) for a full copy of disclaimer.

**ELEMENTICF**<sup>®</sup>  
LOGIX BRANDS

[info@elementicf.com](mailto:info@elementicf.com)  
[Elementicf.com](https://Elementicf.com)

A PRODUCT BY  
**LOGIX**<sup>®</sup>  
BRANDS

Copyright of Logix Brands Ltd. All Rights Reserved.