

THE HEARTLAND 1250

WITH BASEMENT

Design, Floor Plan & Elevations



[ElementicF.com](https://www.elementicf.com)



The drawings and images contained in these pages are current at the time of printing. However, the drawings and images may differ slightly when final plan sets are requested, as designs are subject to change.

THE HEARTLAND 1250 WITH BASEMENT DESIGN

WITH BASEMENT
DESIGN



FEATURES:

3 Bedroom, 2 Bathroom, Kitchen, Living Room

INTERIOR LIVING SPACE:

1212 sq ft

APPROXIMATE EXTERIOR DIMENSIONS:

32' W x 49' D



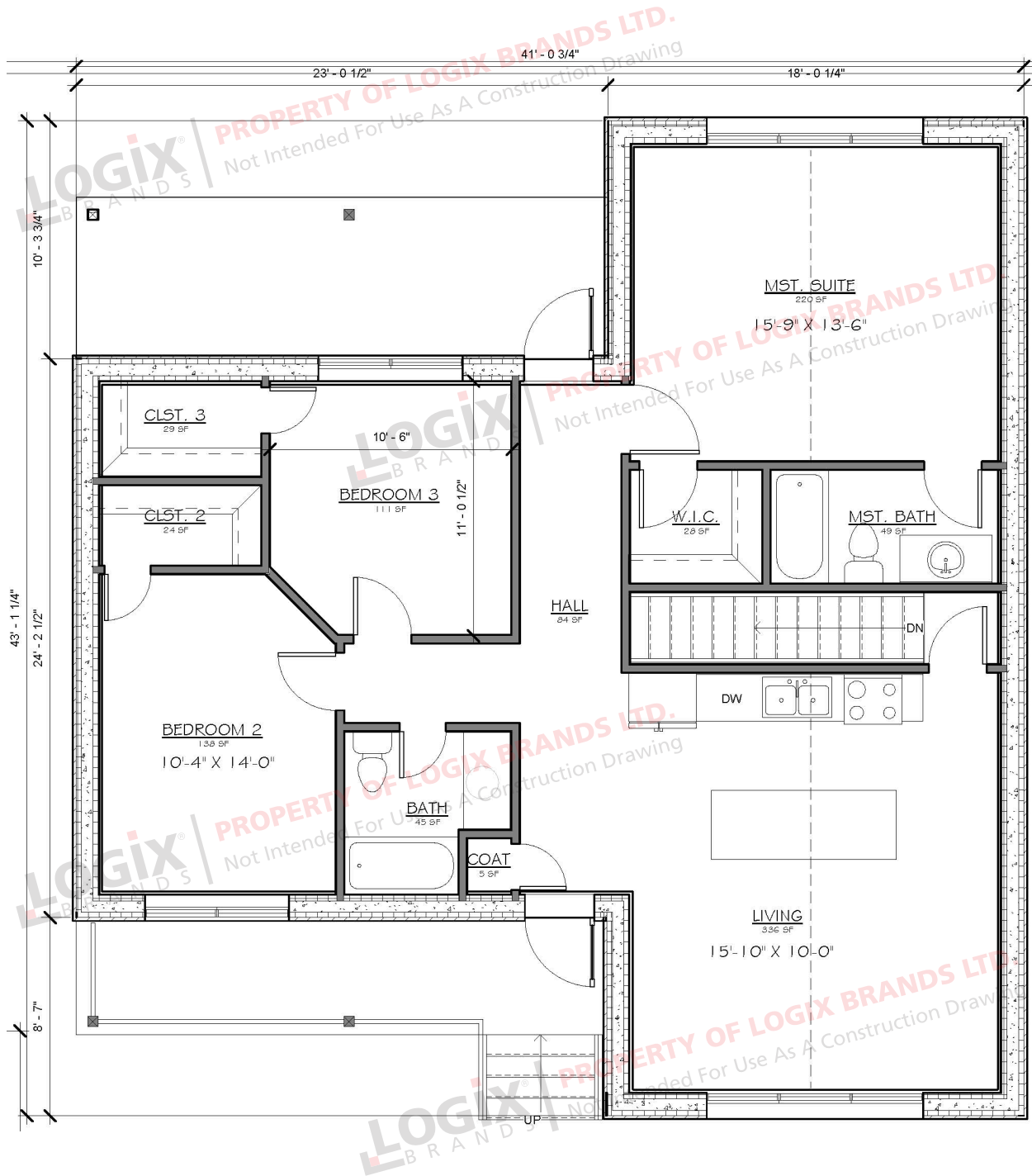
ROOM SCHEDULE:

Name	Level	Area	Perimeter
Bedroom 3	First Floor	138 SF	46' - 7 1/4"
Clst. 3	First Floor	18 SF	23' - 3 1/8"
Primary Suite	First Floor	163 SF	50' - 5 5/8"
Utility	First Floor	36 SF	23' - 11 3/4"
Primary Bath	First Floor	59 SF	38' - 2 5/8"
WIC	First Floor	26 SF	23' - 0 3/4"
W.C.	First Floor	14 SF	15' - 10 1/8"
Shower	First Floor	13 SF	14' - 5"
P.	First Floor	24 SF	19' - 4 5/8"
Primary Hall	First Floor	22 SF	20' - 11 1/8"
Hall	First Floor	20 SF	17' - 11 1/2"
Hall Bath	First Floor	48 SF	29' - 3 1/2"
Bedroom 2	First Floor	139 SF	68' - 3 7/8"
Closet. 2	First Floor	11 SF	14' - 11"
Kitchen	First Floor	176 SF	59' - 9 3/8"
Living Room	First Floor	206 SF	57' - 7"
Hall	First Floor	106 SF	67' - 8 3/8"
Basement	Basement Slab	1270 SF	154' - 0"

THE HEARTLAND 1250

WITH BASEMENT

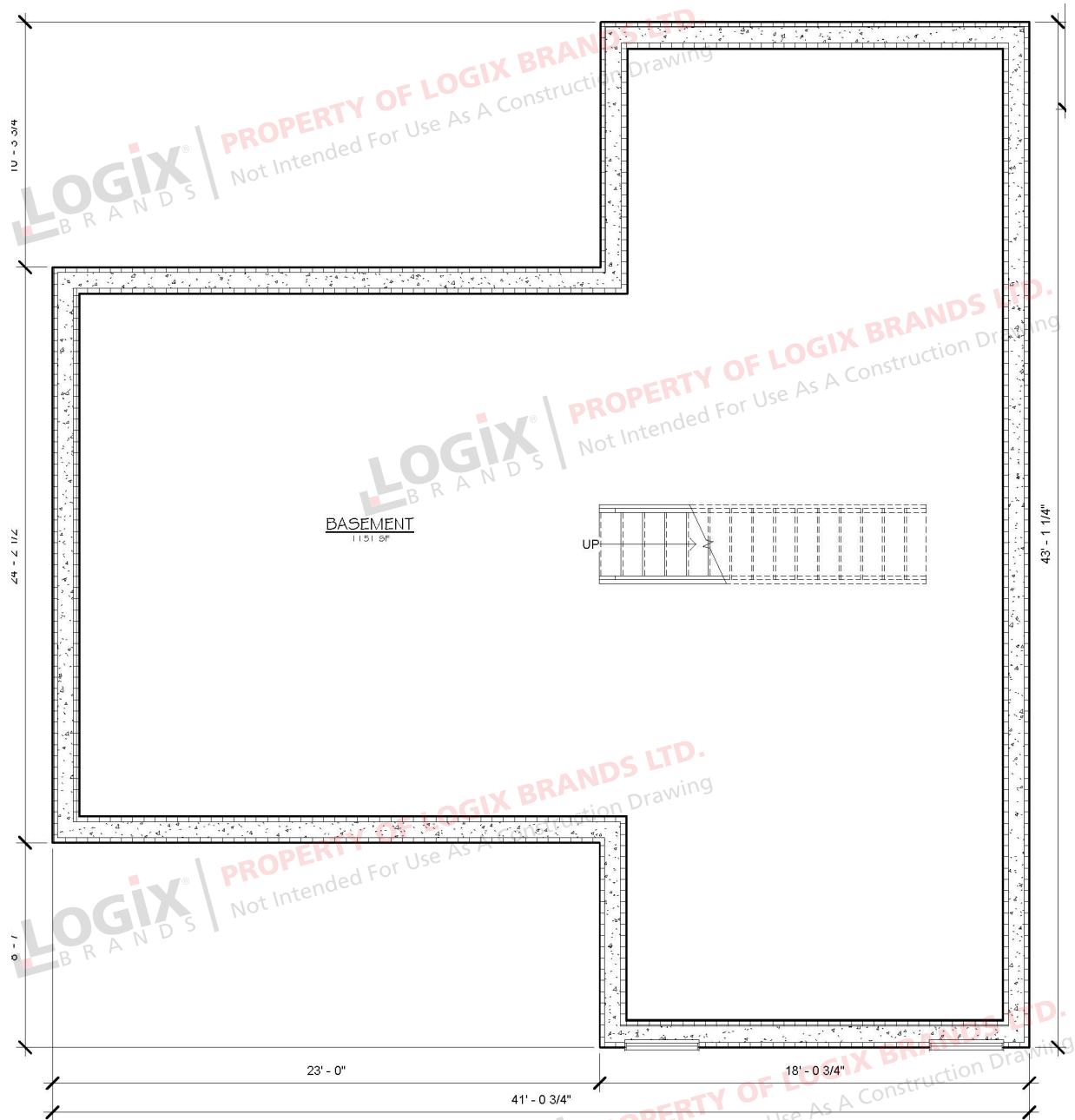
Floor Plan - Main Level



THE HEARTLAND 1250

WITH BASEMENT

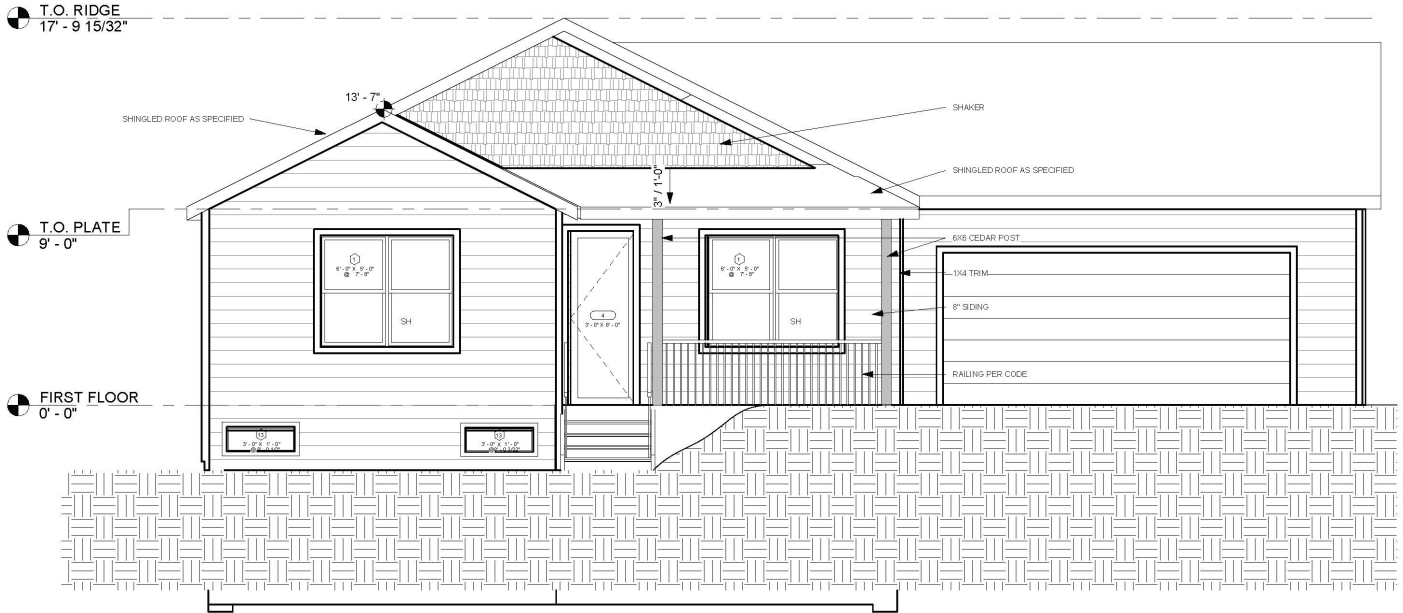
Floor Plan - Basement



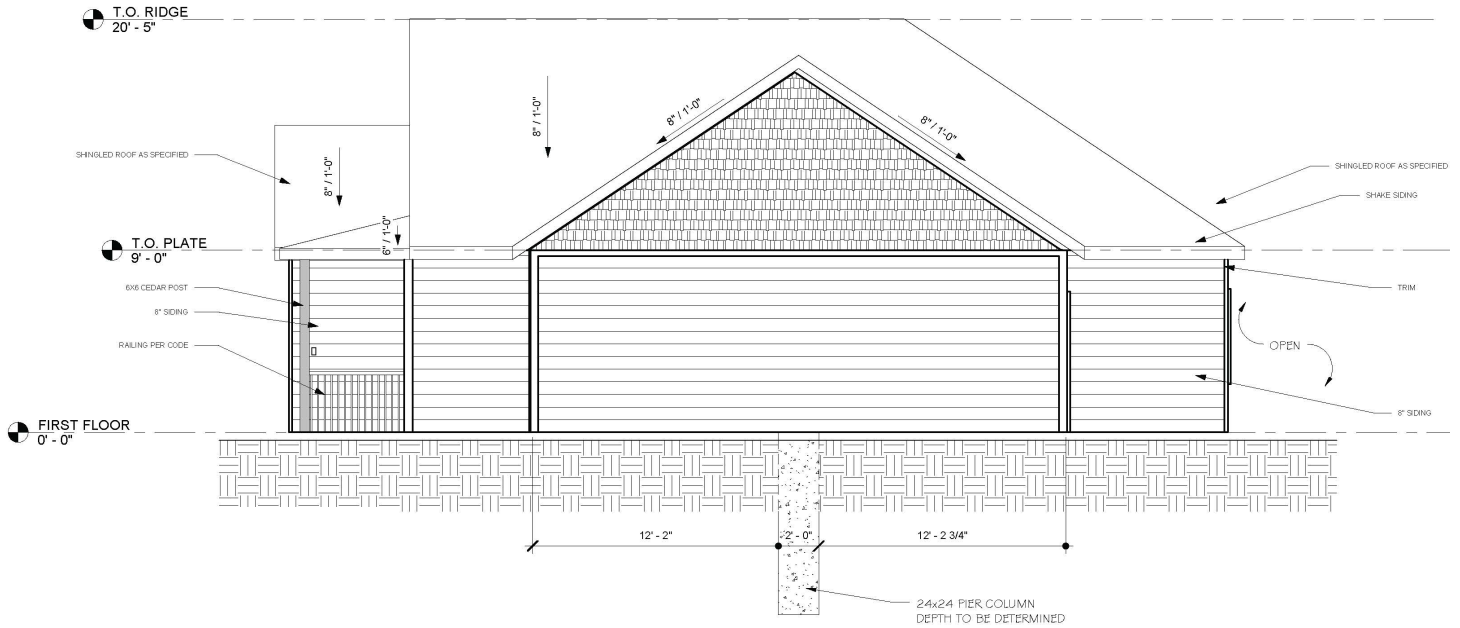
THE HEARTLAND 1250

WITH BASEMENT

Elevations



FRONT ELEVATION

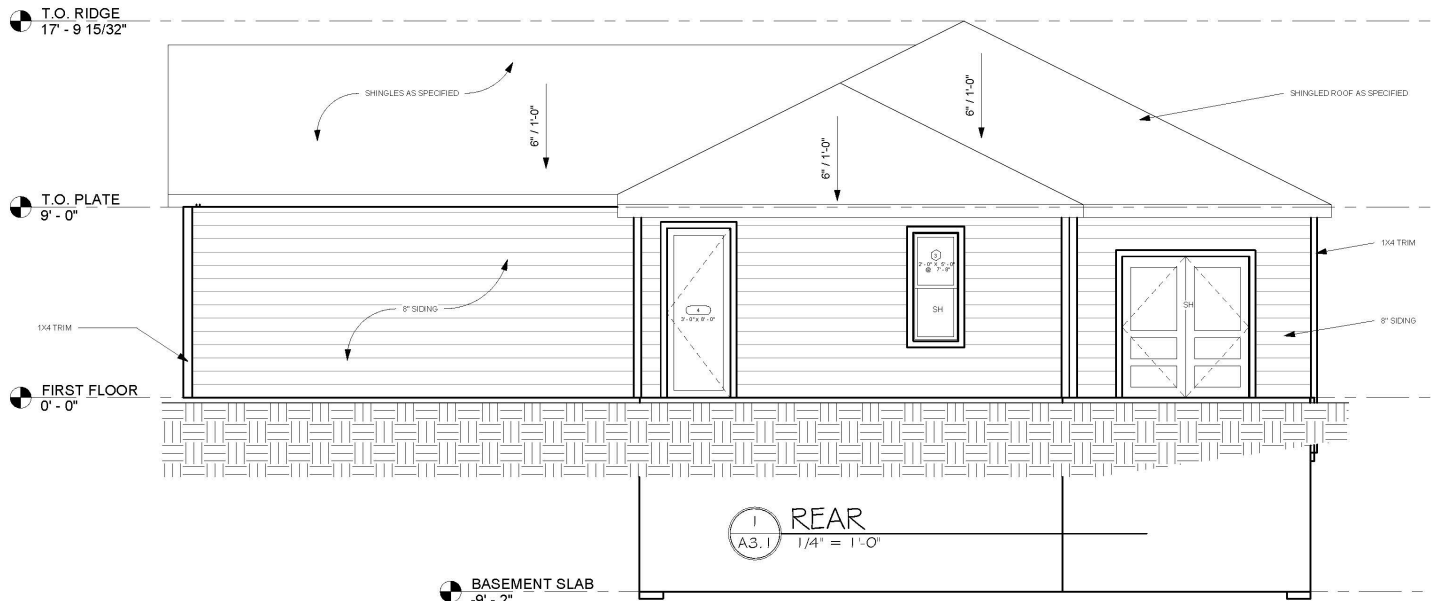


RIGHT ELEVATION

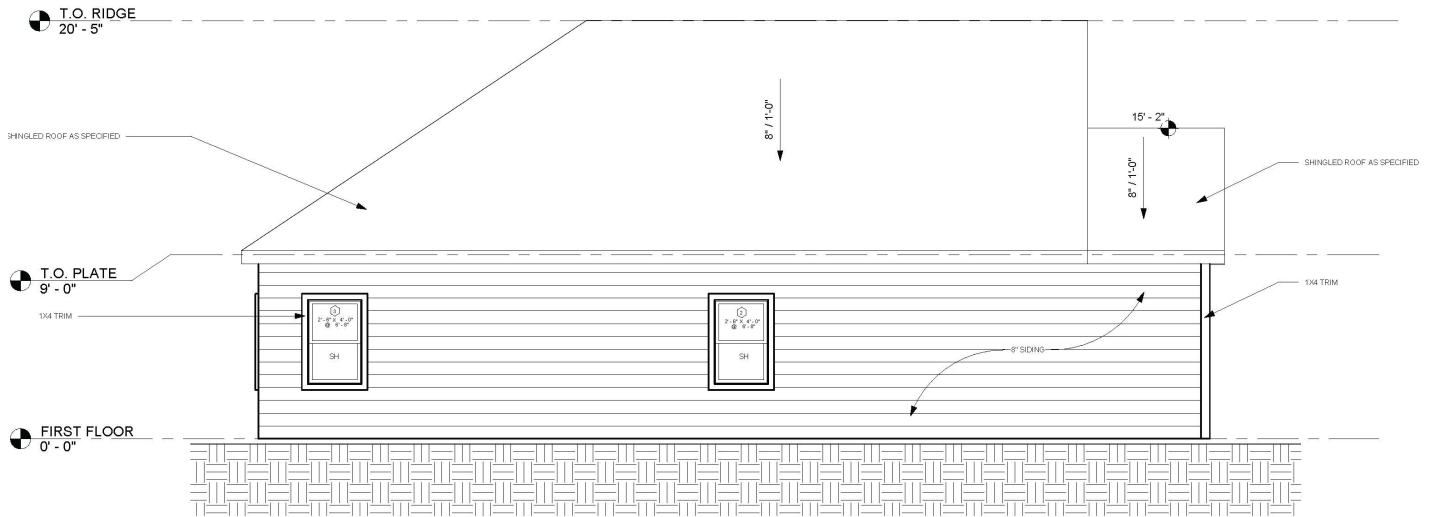
THE HEARTLAND 1250

WITH BASEMENT

Elevations



BACK ELEVATION



LEFT ELEVATION

THE HEARTLAND 1250

DESIGN, FLOOR PLAN & ELEVATIONS



REQUEST A QUOTE & ORDER A PLAN SET BASED ON THIS DESIGN

Your Element ICF advisor can refer you to a designer who will provide a quotation for your complete plan set including any required modifications.

Please note that some locations may require specific engineering and/or local code adoptions. Be sure to check with your contractor or local building authority to see what is required for your area.

[Go to the Online Collection and Request a Quote for this Plan Set](#)



CONNECT WITH A LOCAL MANUFACTURER

888.838.5038

330 Cain Drive
Haysville, KS 67060-2004

888.453.5961

11581-272 St.
Acheson, AB T7X 6E9

888.706.7709

840 Division St.
Cobourg, ON K9A 5V2

888.453.5961

6333 Unsworth Rd.
Chilliwack, BC V2R 5M3

877.789.7622

35 Headingley Rd.
Headingley, MB R4H 0A8



© Copyright Logix Brands Ltd. (2023) All rights reserved.

No part of the work contained herein as covered by this copyright may be reproduced or used in any form, or any means – graphic, electronic or mechanical, including without limitation photocopying. By using these products, you agree to assume all risks associated therewith. See LogixBrands.com/Disclaimer-General for a full copy of disclaimer.

ELEMENTICF[®]
LOGIX BRANDS

info@elementicf.com
Elementicf.com

A PRODUCT BY
LOGIX[®]
BRANDS

Copyright of Logix Brands Ltd. All Rights Reserved.