

THE WEST COAST 950

WITH BASEMENT

Design, Floor Plan & Elevations



[ElementicF.com](https://www.ElementicF.com)



The drawings and images contained in these pages are current at the time of printing. However, the drawings and images may differ slightly when final plan sets are requested, as designs are subject to change.

THE WEST COAST 950 WITH BASEMENT DESIGN



FEATURES:

4 Bedrooms, 4 Bathrooms, Kitchen, Living Room, Family Room (Including Basement)

INTERIOR LIVING SPACE:

Ground Floor: 956 sq ft Basement: 920 sq ft

APPROXIMATE EXTERIOR DIMENSIONS:

37' W x 40' D



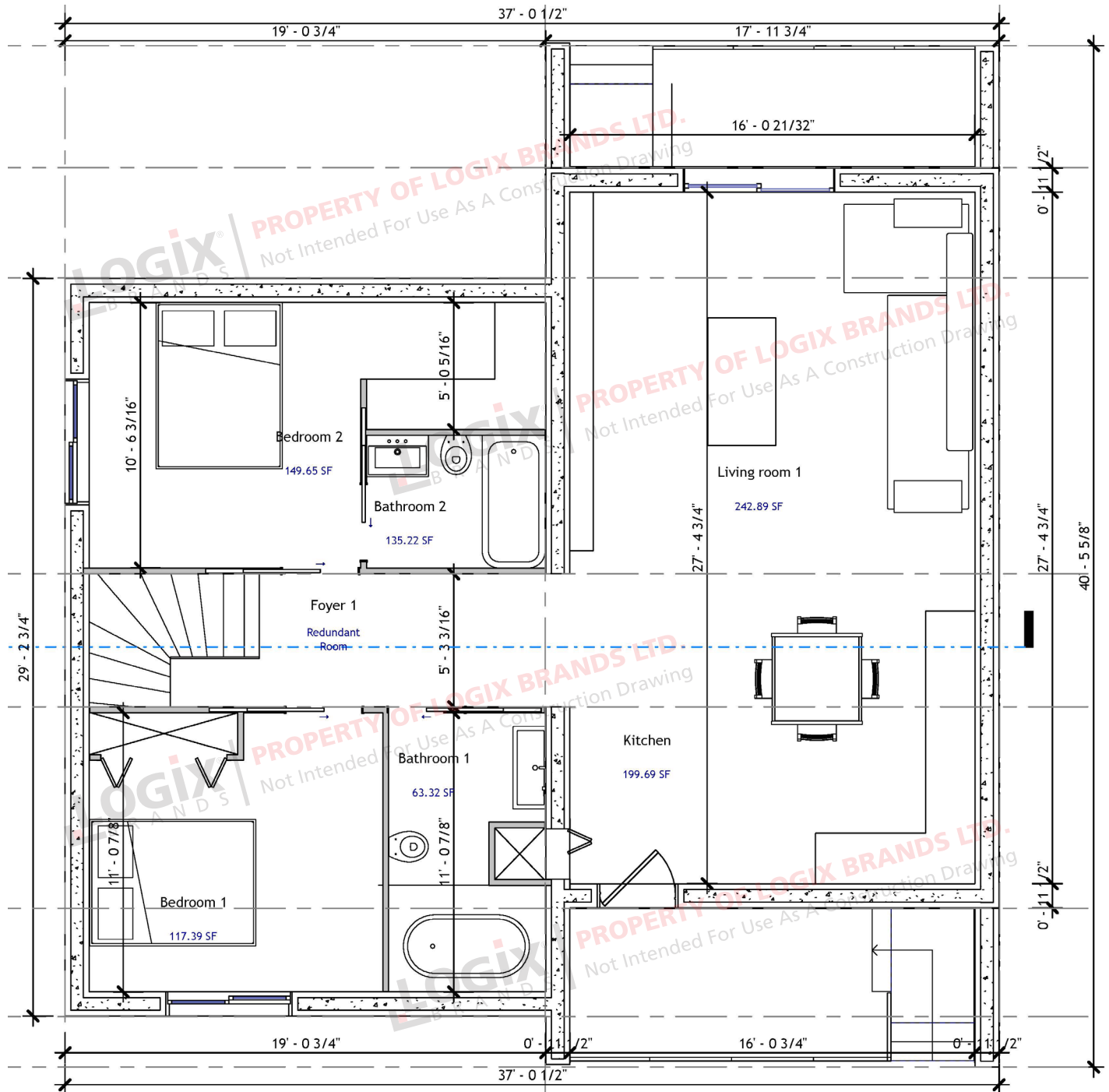
ROOM SCHEDULE:

| Name | Level | Area | Perimeter |
|---------------|--------------|----------------|-----------|
| Office Nook | Basement | 22' - 10" | 33.10 SF |
| Bathroom 3 | Basement | 25' - 11 1/4" | 40.00 SF |
| Laundry | Basement | 30' - 1 3/8" | 56.42 SF |
| Bathroom 4 | Basement | 45' - 3 21/32" | 79.34 SF |
| Bedroom 3 | Basement | 40' - 4 3/4" | 101.42 SF |
| Foyer 2 | Basement | 87' - 3 23/32" | 144.24 SF |
| Bedroom 4 | Basement | 68' - 5 7/8" | 157.74 SF |
| Llving Room 2 | Basement | 69' - 5 1/16" | 299.53 SF |
| Bathroom 1 | Ground Floor | 39' - 1 1/4" | 63.32 SF |
| Bedroom 1 | Ground Floor | 45' - 5 3/8" | 117.39 SF |
| Bathroom 2 | Ground Floor | 72' - 7 15/32" | 135.22 SF |
| Bedroom 2 | Ground Floor | 61' - 2 29/32" | 149.65 SF |
| Kitchen | Ground Floor | 57' - 7 19/32" | 199.69 SF |
| Living Room 1 | Ground Floor | 62' - 4 13/32" | 242.89 SF |

THE WEST COAST 950

WITH BASEMENT

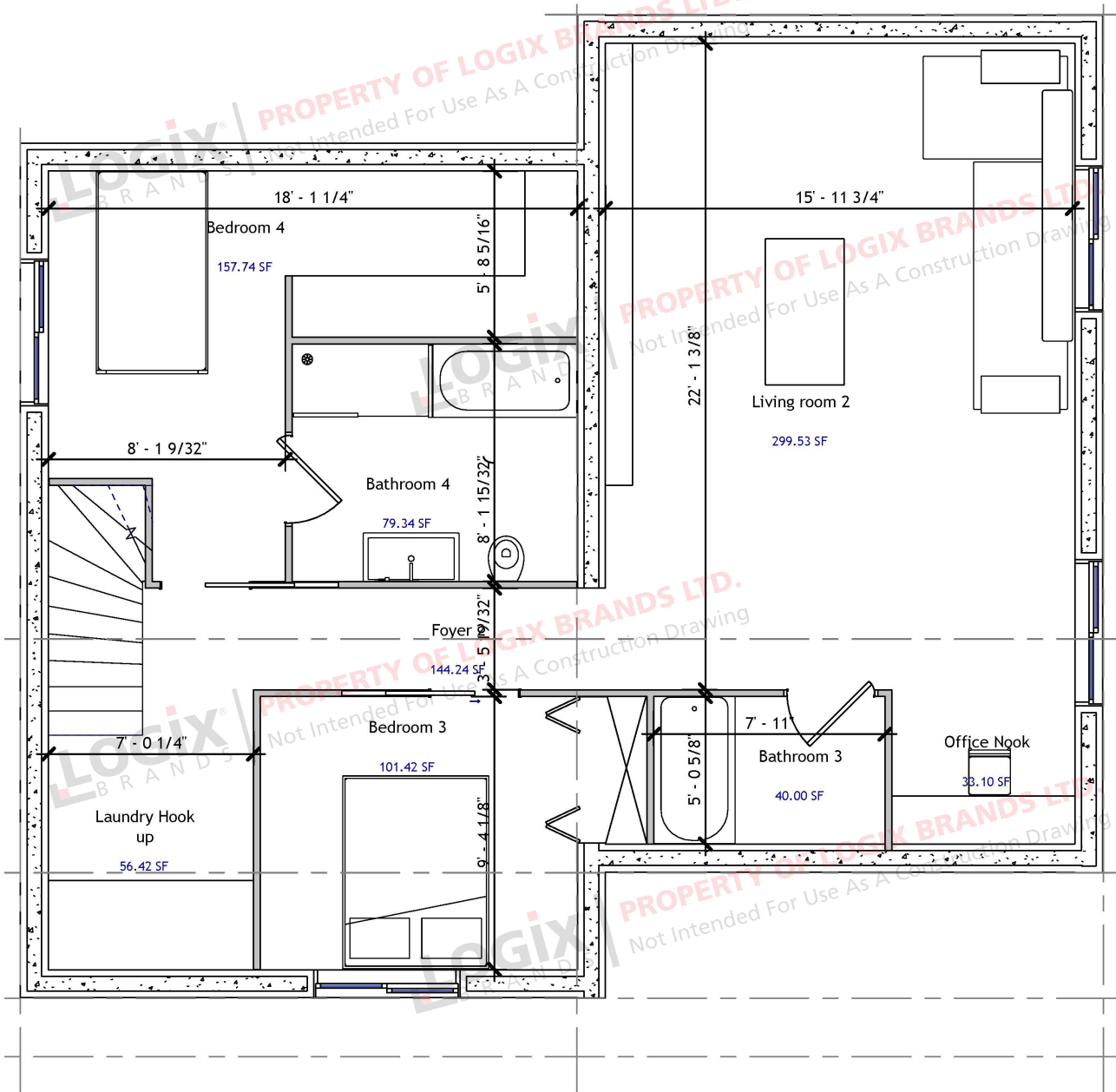
Floor Plan - Main Level



THE WEST COAST 950

WITH BASEMENT

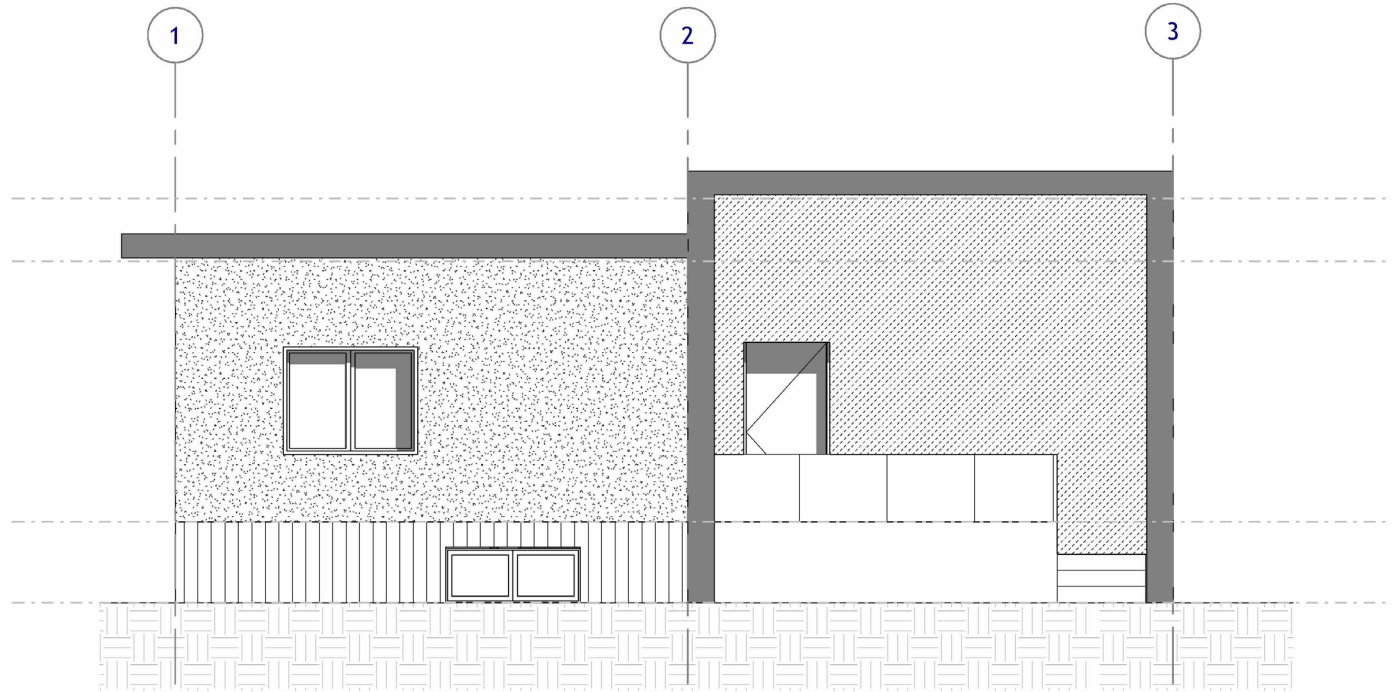
Floor Plan - Basement



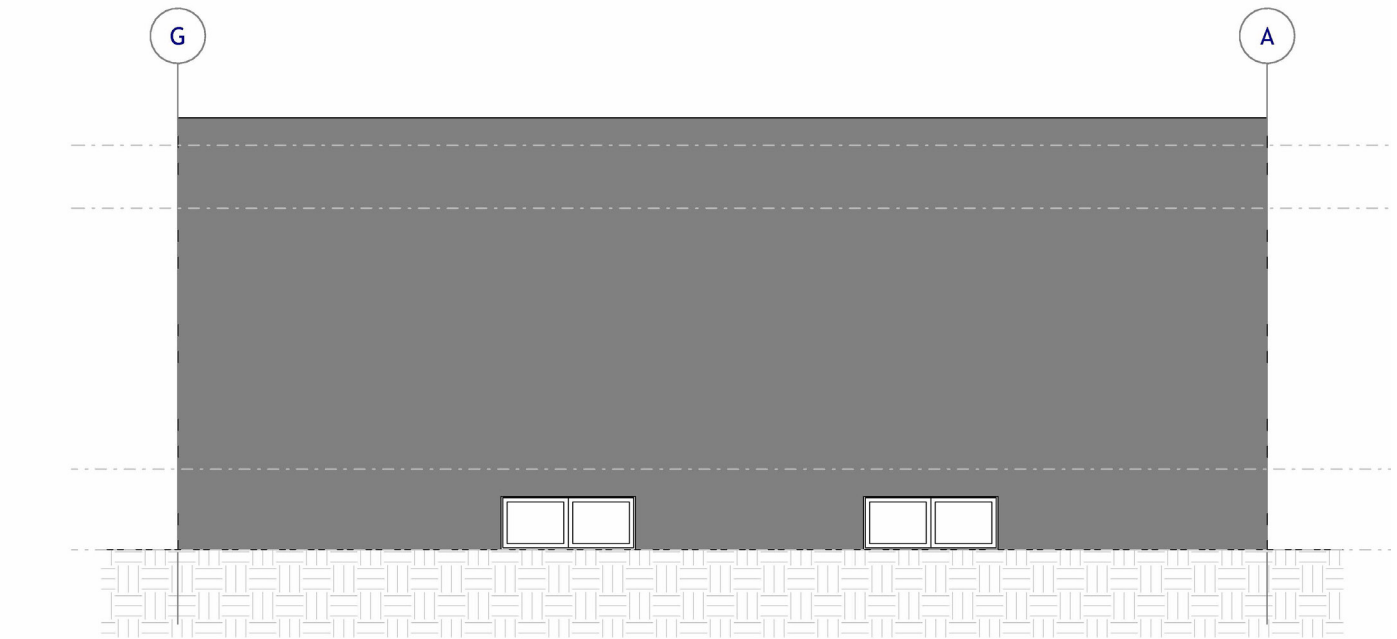
THE WEST COAST 950

WITH BASEMENT

Elevations



FRONT ELEVATION

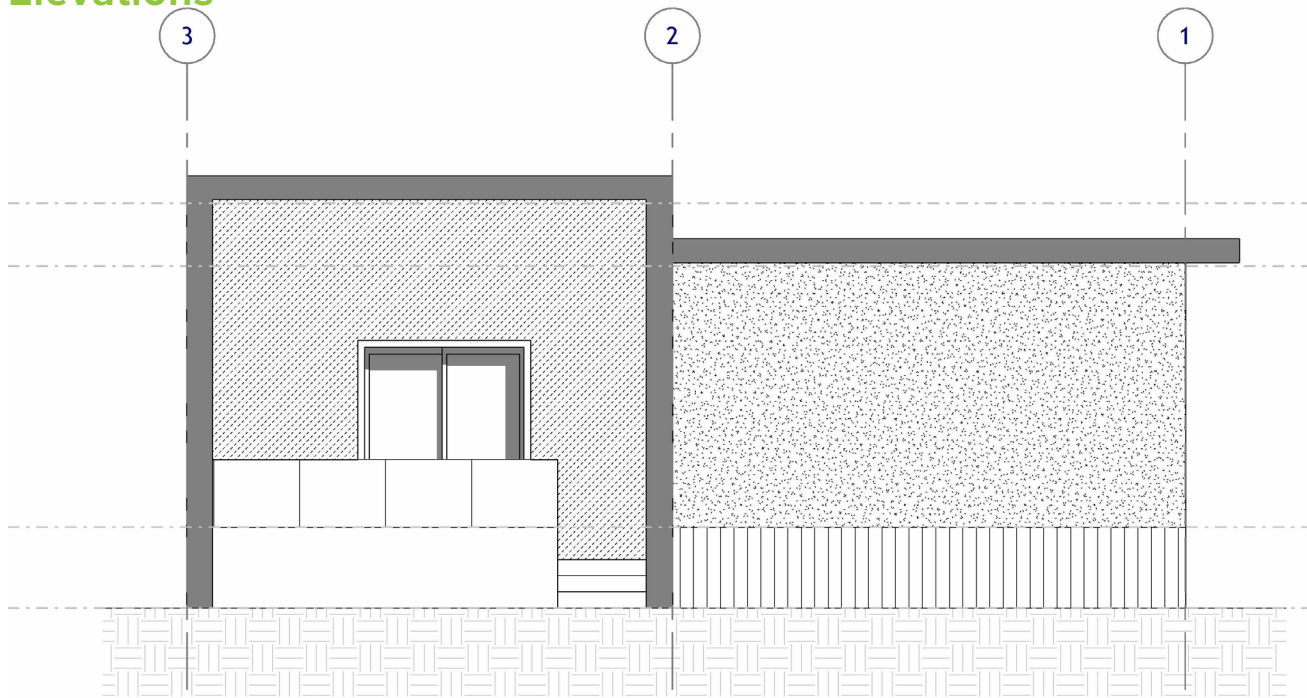


RIGHT ELEVATION

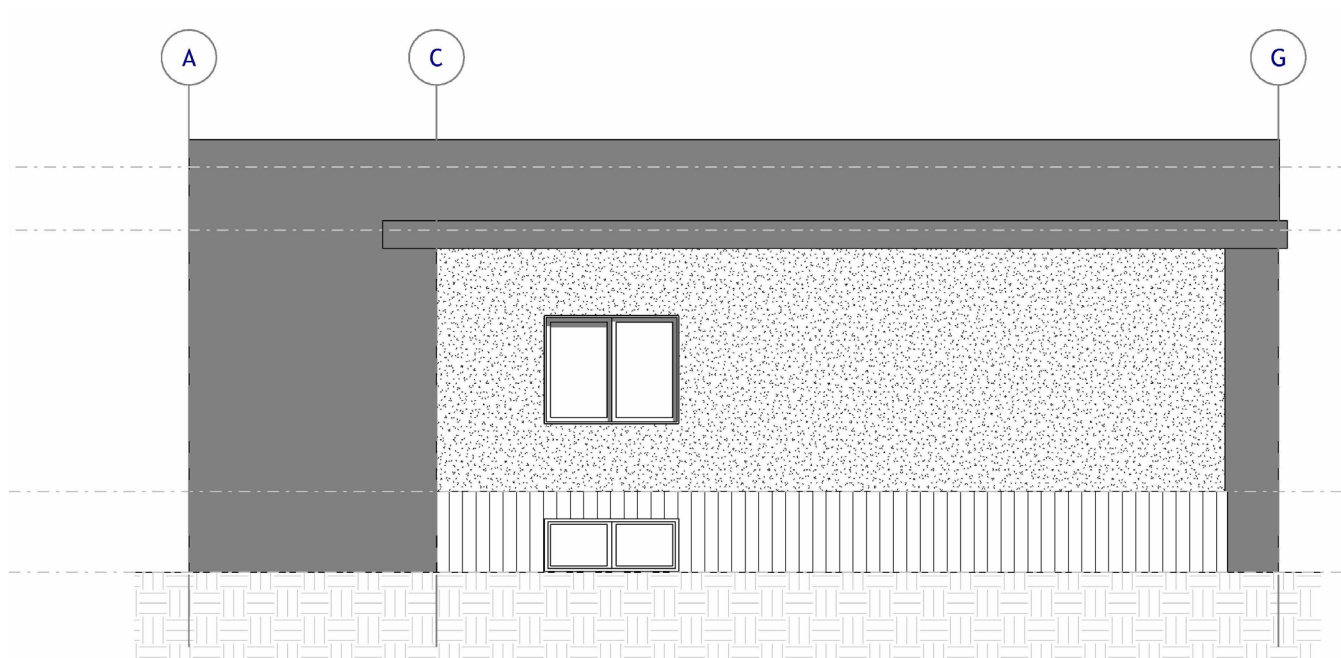
THE WEST COAST 950

WITH BASEMENT

Elevations



BACK ELEVATION



LEFT ELEVATION

THE WEST COAST 950

DESIGN, FLOOR PLAN & ELEVATIONS



REQUEST A QUOTE & ORDER A PLAN SET BASED ON THIS DESIGN

Your Element ICF advisor can refer you to a designer who will provide a quotation for your complete plan set including any required modifications.

Please note that some locations may require specific engineering and/or local code adoptions. Be sure to check with your contractor or local building authority to see what is required for your area.

[Go to the Online Collection and Request a Quote for this Plan Set](#)



CONNECT WITH A LOCAL MANUFACTURER

888.838.5038

330 Cain Drive
Haysville, KS 67060-2004

888.453.5961

11581-272 St.
Acheson, AB T7X 6E9

888.706.7709

840 Division St.
Cobourg, ON K9A 5V2

888.453.5961

6333 Unsworth Rd.
Chilliwack, BC V2R 5M3

877.789.7622

35 Headingley Rd.
Headingley, MB R4H 0A8



© Copyright Logix Brands Ltd. (2023) All rights reserved.

No part of the work contained herein as covered by this copyright may be reproduced or used in any form, or any means – graphic, electronic or mechanical, including without limitation photocopying. By using these products, you agree to assume all risks associated therewith. See LogixBrands.com/Disclaimer-General for a full copy of disclaimer.

ELEMENTICF[®]
LOGIX BRANDS

info@elementicf.com
Elementicf.com

A PRODUCT BY
LOGIX[®]
BRANDS

Copyright of Logix Brands Ltd. All Rights Reserved.